

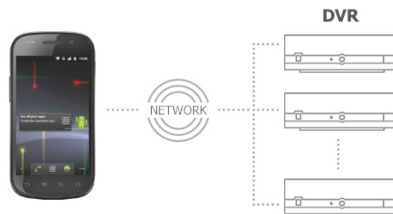
REVO Mobile for Android

REVO Mobile for Android allows you to access remote DVRs and monitor live video via network connections using Android platform based mobile devices anytime from virtually anywhere.

System Requirements

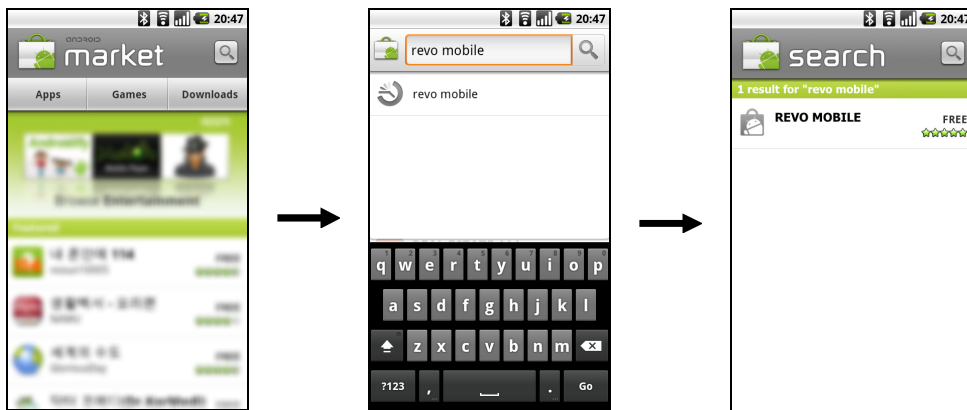
- Operating System: Google Android 2.0 to 2.2
- Processor: ARMv7 compatible processor
- Display: 240x240 pixel to 800x480 pixel
- Storage: 15MB or more
- Network: Wi-Fi or mobile network (3G) supported by Android mobile device

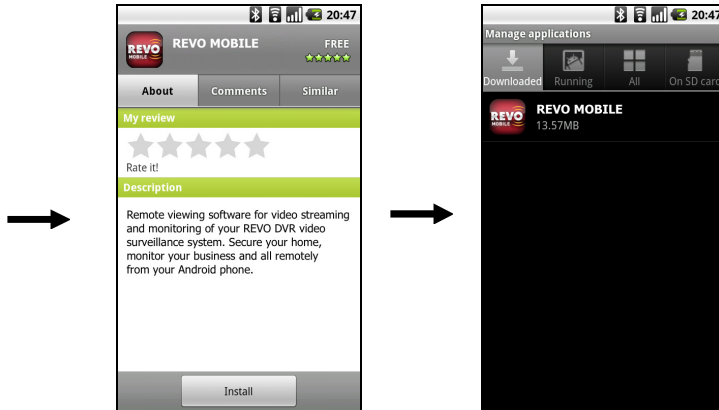
System Diagram



Installation

1. Run the Market application in the device.
2. Enter REVO Mobile in the search field of the Market application.
3. Install the REVO Mobile program and run the program.





NOTE: If you want to remove the REVO Mobile program, go to *Settings* → *Applications* → *Manage applications*. Touch *REVO Mobile* and *Uninstall* button.

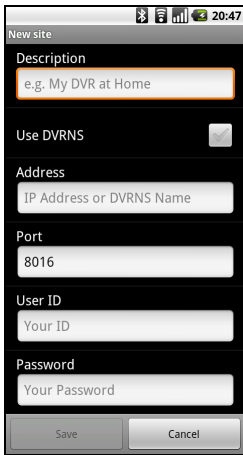
Operation

1. Run the REVO Mobile program. Push the Menu button of the device and the following default menu is displayed.



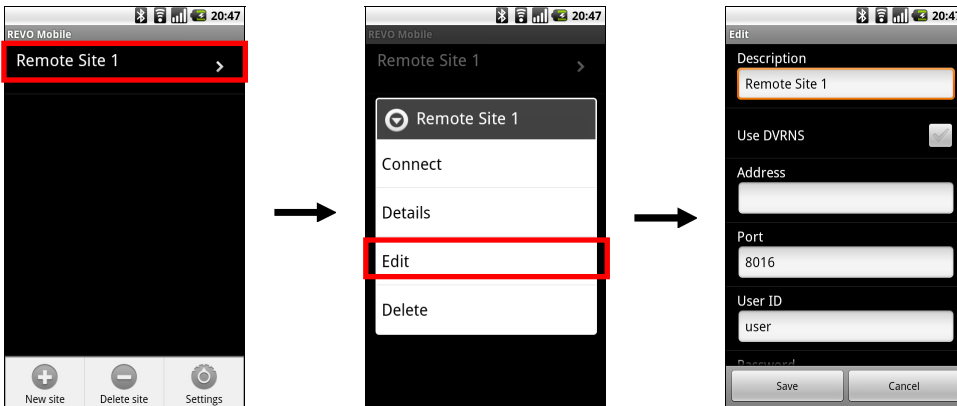
- **New site:** Touch to register DVRs.
- **Settings:** Touch to edit the settings or check the information about the REVO Mobile program.

2. Touch the **New site** button and enter the DVR information to register the DVR.

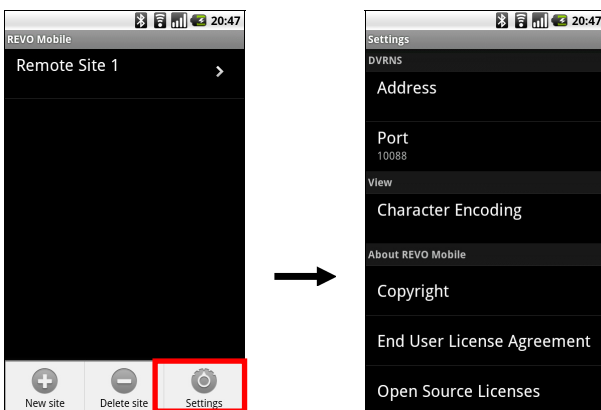


- **Description:** Enter the DVR name to use in the REVO Mobile program.
- **Use DVRNS:** If the DVR uses the DVRNS function, enable the Use DVRNS option. You can set up the information for the DVRNS server by touching the **Settings** button in the default menu.
- **Address, Port:** Enter the IP address and port number of the DVR. If the DVR uses the DVRNS function, check that the Use DVRNS option is enabled and enter the DVR name registered on the DVRNS server instead of the IP address. The name you enter should match the name set during the DVRNS setup on the DVR.
- **User ID, Password:** Enter the user ID and password. The user ID and password you enter should match the user ID and password used to log in the DVR.

3. If you want to edit the information for the registered DVR, select the DVR from the DVR list and touch it for about 3 seconds. Touch **Edit** in the pop-up menu and edit the information.



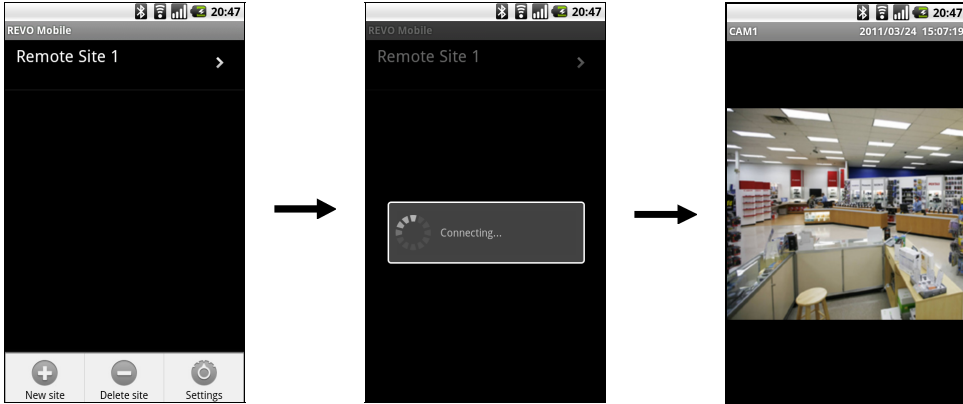
4. Touch the **Settings** button in the default menu. Check the settings for the REVO Mobile program and edit the settings if necessary.



- **DVRNS:** If the DVR uses the DVRNS function, set up the information for the DVRNS server. Enter the IP address (or domain name) and port number of the DVRNS server. The IP address (or domain name) and port number of the DVRNS server should match them registered on the DVRs.
- **View:** Select the language to be used when displaying text on the monitored video such as camera titles. The language should match the one used by the DVR so that textual information is displayed properly. If the language used by the DVR (except Chinese) is not supported by the REVO Mobile program, select European.

Monitoring

1. Select a DVR to monitor from the DVR list in the default menu. Video from the DVR is displayed on the screen.



2. Push the Menu button of the device and a camera menu is displayed at the bottom of the screen. Touch the camera menu and select a desired camera from the camera list. Video from the camera is displayed on the screen.



3. Push the Cancel button of the device to monitor video from other DVRs. The current connection is released and the default menu is displayed.